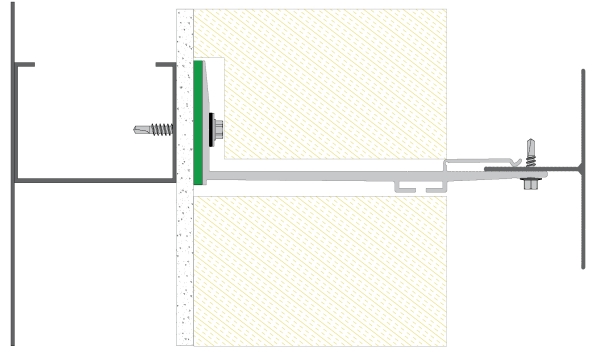


Aluminium Bracket



Application

Aluminium brackets for fixing to steel, masonry and timber substrates to support rainscreen cladding panels via a range of different rail profiles and carrier systems.

Material

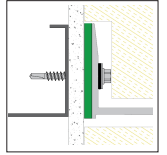
Bracket - Aluminium 6005A T6
Isolator - Polypropelene

Approvals



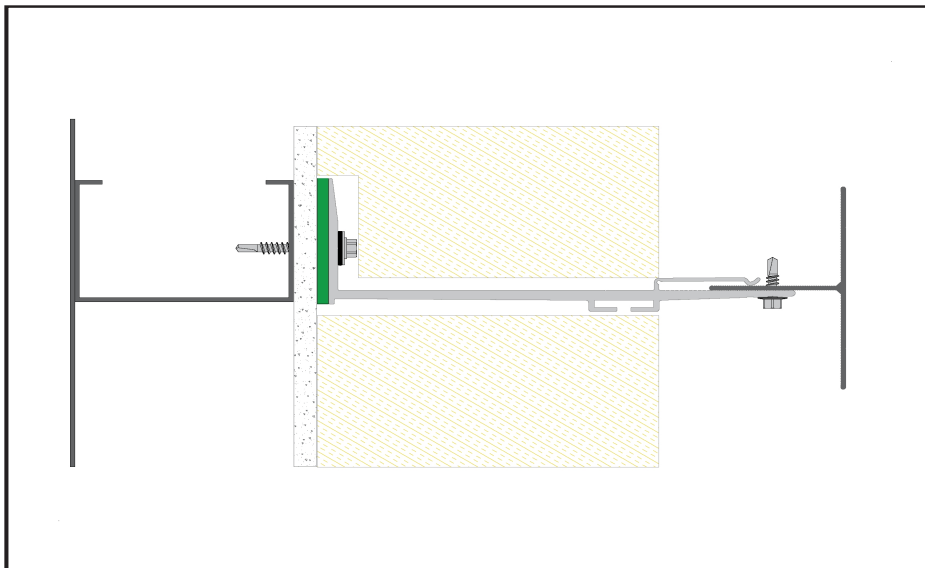
Features and Benefits

- Full range of bracket sizes (40mm-300mm)
 - Each bracket includes 40mm rail adjustment
 - Available in single and double bracket versions
 - Brackets include holes and slots to support dead load and allow for thermal expansion
 - Full range of cladding systems to support most types of panel
 - Includes an isolator which also acts as a thermal break
 - Project Builder Support
-



Insulant

Technical data		Specification
Thickness	5mm	-
Colour	Green	-
Density	910kg/m ²	ISO 1183
Thermal conductivity	0.117W/mk	
Thermal resistance		
Reaction to fire	Thermal break exemption	Building Regulation 7



The details stated are results of tests and/or calculations and therefore are non-binding and do not represent guarantees or warranted characteristics for not specified applications. All calculations therefore have to be checked and approved by the responsible planner ahead of execution. The user is responsible to assure compliance with all applicable laws and regulations.