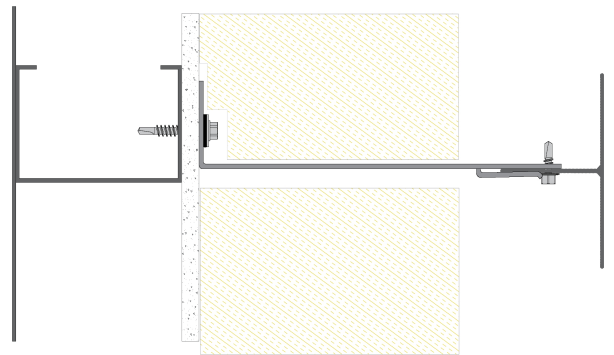
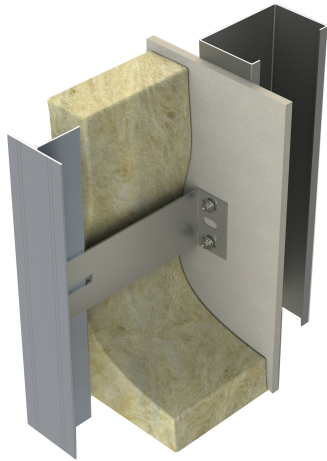


Stainless Steel Bracket



Application

Stainless Steel brackets for fixing to steel, masonry and timber substrates to support rainscreen cladding panels via a range of different rail profiles and carrier systems for situations where improved thermal performance is key.

Material

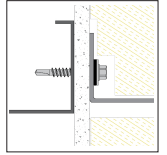
Bracket - 316 Stainless Steel

Approvals

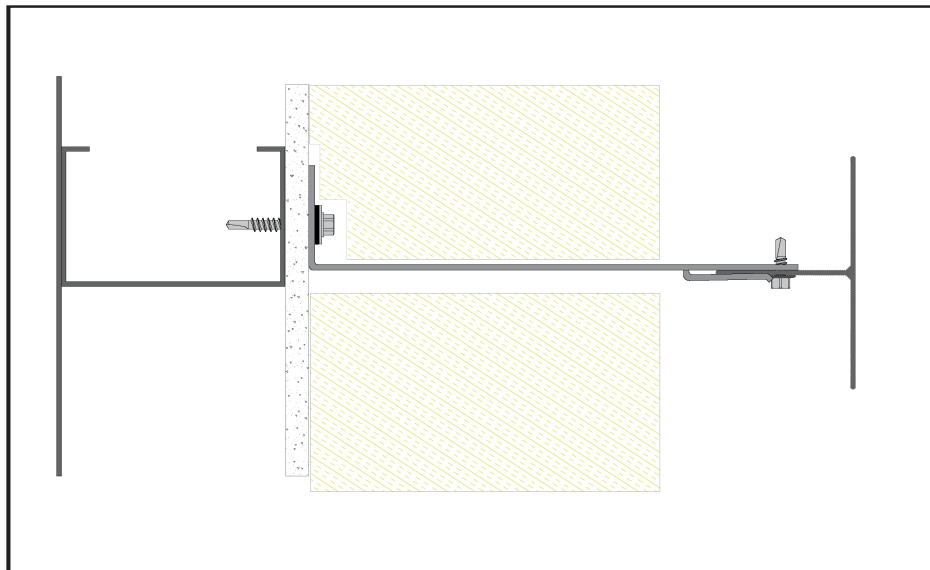


Features and Benefits

- Range of bracket sizes (60mm-240mm)
 - Each bracket includes 35mm rail adjustment
 - Available in single and double bracket versions
 - Brackets include holes and slots to support dead load and allow for thermal expansion
 - Full range of cladding systems to support most types of panel
 - Project Builder Support
 - Improved Thermal Performance
 - No isolator required
-



Technical data		Specification
Thermal conductivity	16.3W/mk	
Reaction to fire	A1	EC Directive 1996D0603



The details stated are results of tests and/or calculations and therefore are non-binding and do not represent guaranties or warranted characteristics for not specified applications. All calculations therefore have to be checked and approved by the responsible planner ahead of execution. The user is responsible to assure compliance with all applicable laws and regulations.