

**SFS**

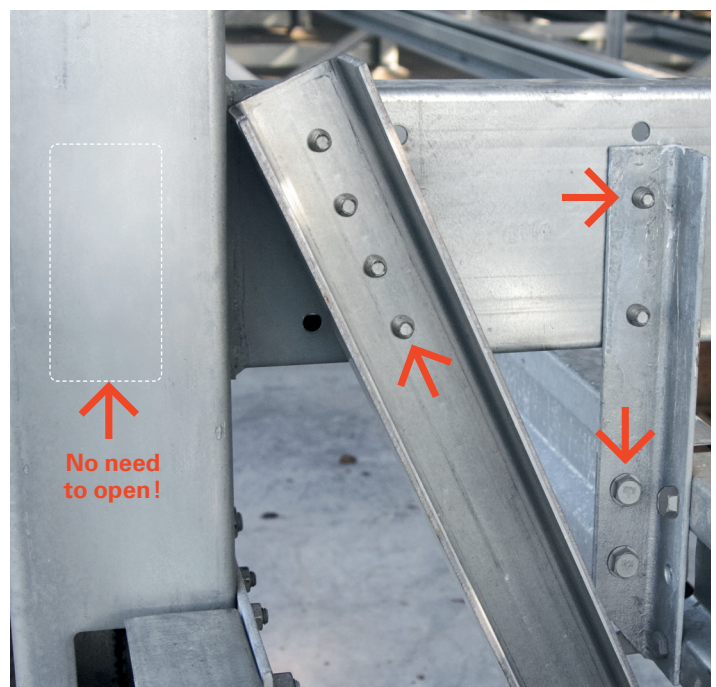
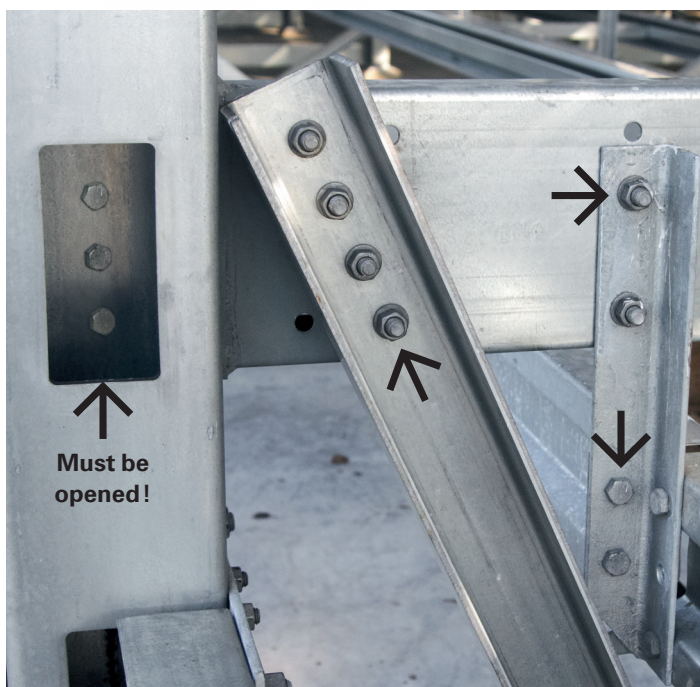
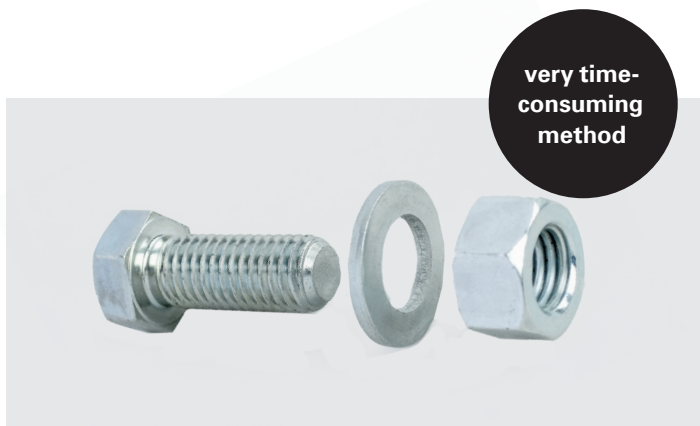


# Self tapping fastener **nonut<sup>®</sup>**

Easy, fast and secure connection  
of static loaded metal components

# It's time for a change of system

Put supporting structures subject to static load together in a faster and more efficient manner with the secure, direct screw connection.



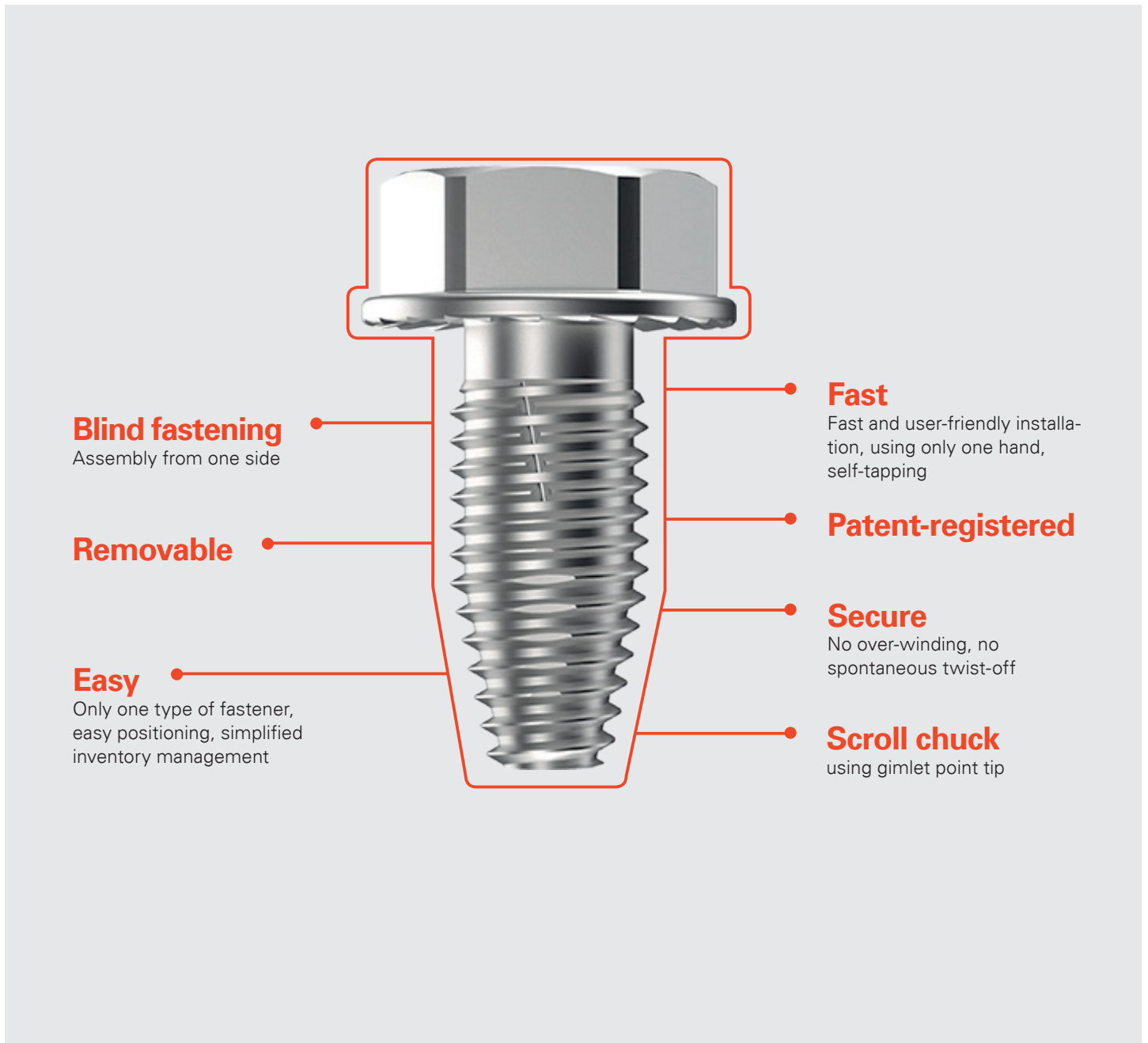
## Previously time-consuming method

Before, putting pre-drilled supports together had been complicated and time-consuming, requiring the use of standard bolts, washers and nuts. The connection had to be accessible from both sides.

## New, simple direct connection

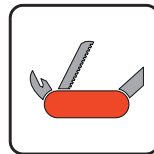
The self threading fastener, nonut® is inserted into the punched hole and effortlessly driven in using a cordless tangential impact driver.

# Convincing Features



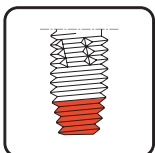
## Non-removable

- With locking teeth
- Thread pairing free of play



## User friendly

- One screw and one tool = fitted with one hand



## Self-tapping

- Non-cutting
- Nut or reaming omitted



## Approval

- Certified product with EU approval ETA-11/0191



# Typical areas of application

---

High rack construction



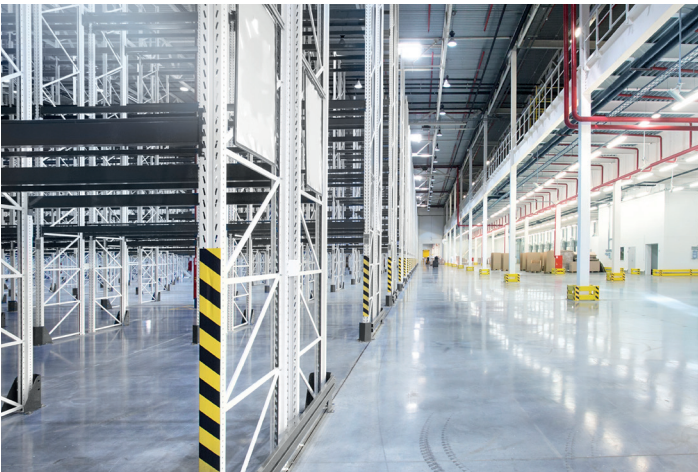
---

Steel construction for PV-sites



---

Platform construction



---

Shelf construction



---

Steelwork



---

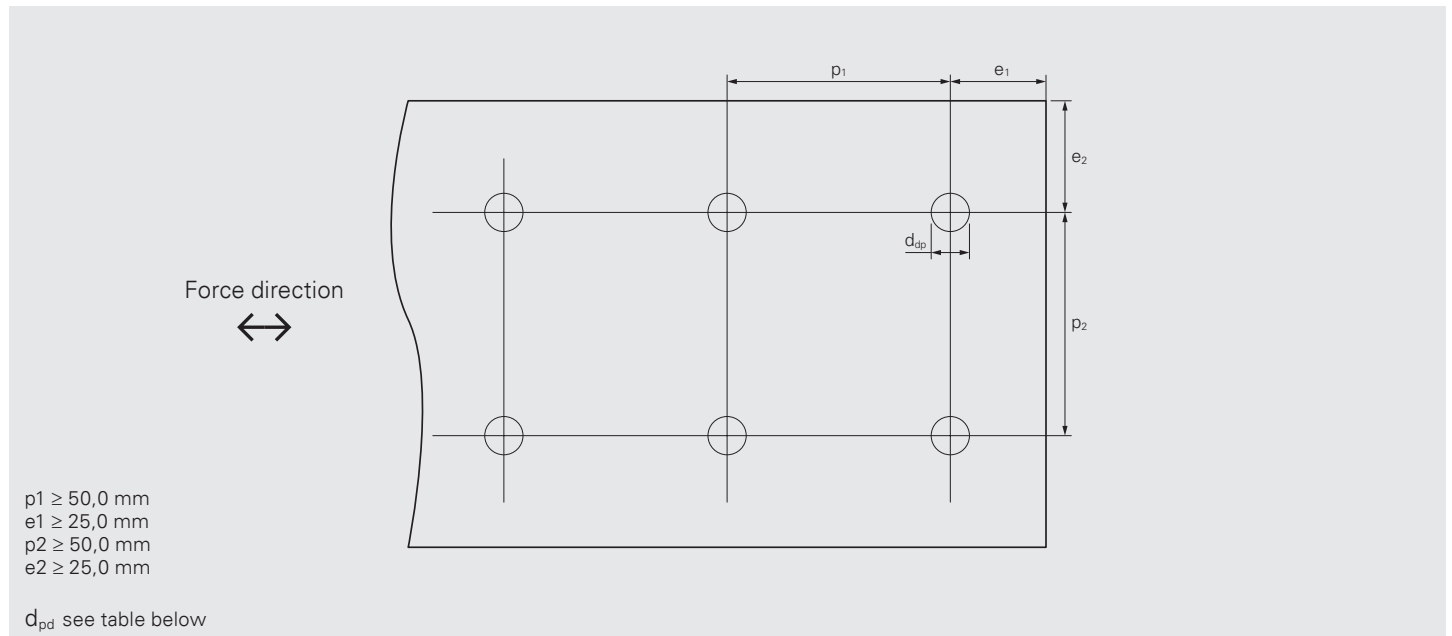
Lightweight construction



# Application range

## Edge and corner distances

The following minimum edge and center distances apply:

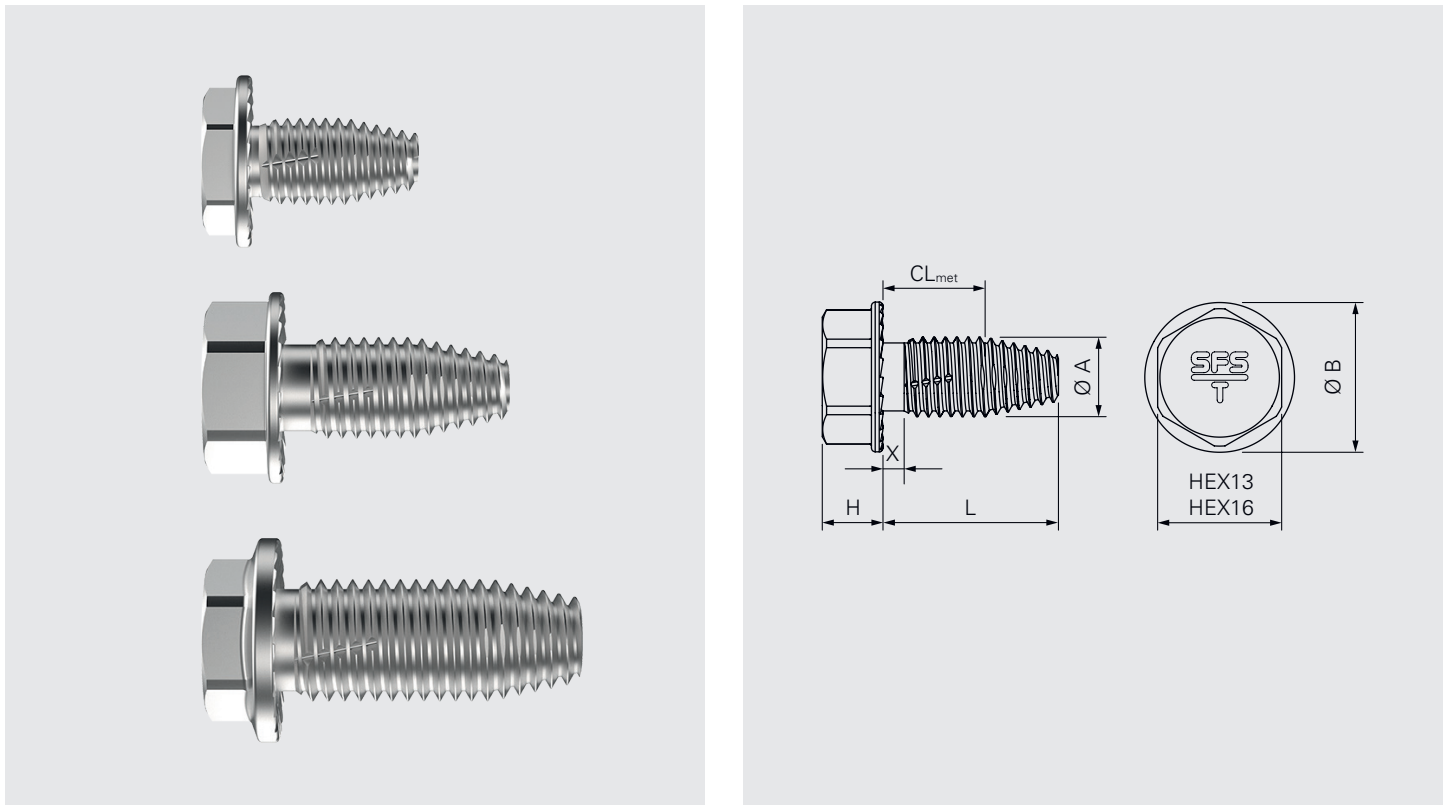


## Component combinations and pilot bore diameter acc. to ETA-11/0191

nonut®-TDBL/TDBLF Ø (Screw type acc. to ETA-11/0191)	Thickness of connected elements		Pre-drilling Ø	
	Component I: $t_I$	Component II: $t_{II}$	Component I	Component II
8.6	0.88–3.0	0.88–3.0	7.5	7.5
		$\geq 3.0$	8.0	8.0
	$2 \times 0.88$ – $2 \times 2.0$			
	0.88–2.0	0.88–3.0	6.5×10	7.5
		$\geq 3.0$		8.0
	$2 \times 0.88$ – $2 \times 2.0$			
	0.88–2.0	$\geq 0.88$		6.5×10
10.6	$2 \times 0.88$ – $2 \times 2.0$	$\geq 3.0$	10.0	10.0
			8.5×28.5	
	0.88–4.0	1.0–3.0		9.0
		$\geq 3.0$		10.0
	1.0–4.0	1.0–3.0	9.0	9.0
		3.0–15.0	10.0	10.0
	5.0–17.0		12.0	
13.4	1.0–4.0	1.5–6.0	12.5	12.5
		5.0–19.0	13.0	13.0
	5.0–17.0	3.0–5.0	15.0	12.5
		5.0–15.0		13.0

# Product overview

## nonut® TDBL



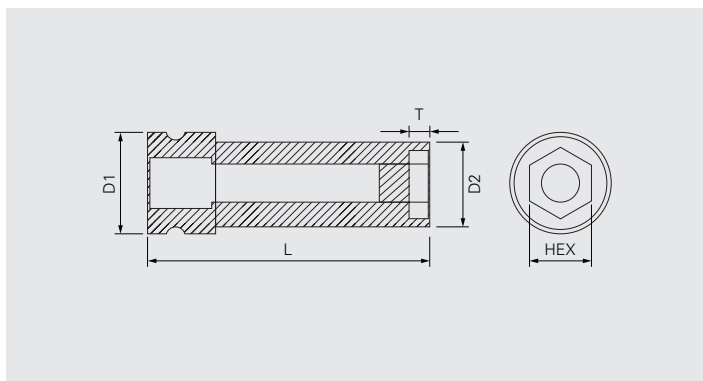
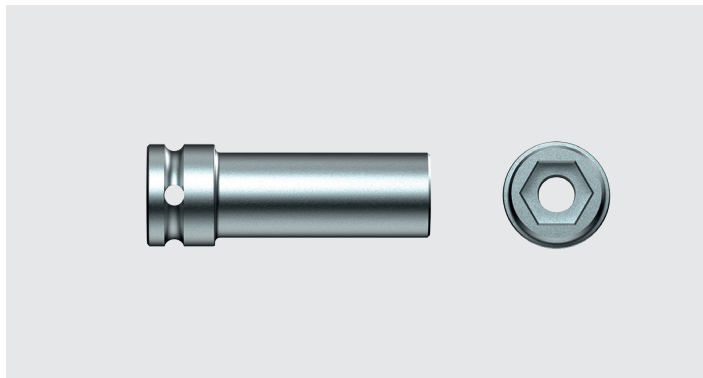
**Self-tapping fastener**  
for fastening in steel, steel grades up to S355,  
S450GD, HX460LAD

Produkt code	VPE	L	CL <sub>met</sub>	Head drive	Ø A	Ø B	x	H	Mat.-No.
nonut®-TDBL-T-8,6×16	200	16	0–9	HEX13	8.60	16.0	2.0	7	1542214
nonut®-TDBLF-T-F-8,6×16*							<1.0	4.7	1541860
nonut®-TDBL-T-8,6×50	100	50	0–43				3.0	7	1607124
nonut®-TDBL-T-10,6×23	100	23	0–13	HEX16	10.60	20.0	3.0	8	1542223
nonut®-TDBLF-T-10,6×23							<1.50		1542229
nonut®-TDBL-T-10,6×30		30	0–20				3.0		1542217
nonut®-TDBL-T-10,6×50		50	0–40						1561761
nonut®-TDBLF-T-13,4×23	100	23	0–13	HEX16	13.40	22.0	<2.0	8	1589570
nonut®-TDBLF-T-13,4×33		33	0–23						1592605

\*Flat head

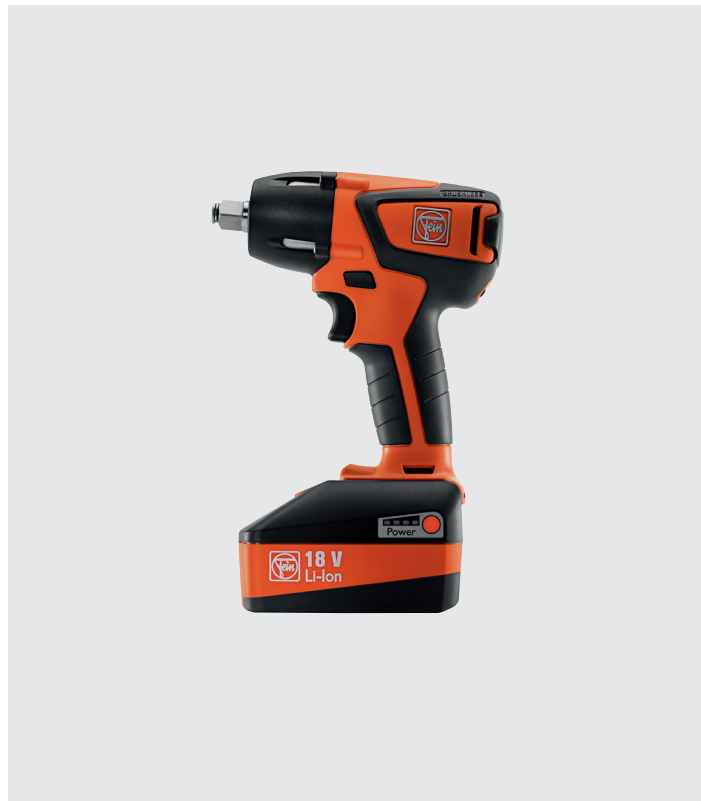


## Accessories









**Use of impact screw gun with magnet**  
to securely hold the fastener, supports  
installation with one hand

## Setting tool



**Tangential impact screw gun**  
maximum torque depending  
on use 150–500 Nm

Produkt code	VPE	Drive	Head drive	L	T	D1	D2	Mat.-No.	
E313-¼"-50	1	¼" hex.	HEX13	50	6	–	20	508029	
E416-½"-38		½" sq.	HEX16	38	7	30	24	1389740	
E513-½"-78			HEX13	78	8	25	21	1649258	
E516-½"-78			HEX16			30	25	1649256	
E516-½"-78-red						22	22	1649257	
ZAW-½"-75		½" sq.		75	–	25	16	1684227	
ZAW-½"-150				150				1684205	

